

HILTON CINCINNATI NETHERLAND PLAZA

THE FACTS



Hilton Cincinnati Netherland Plaza combines the convenience of a downtown location with the grandeur of its landmark building to make every event a work of art. The more than 40,000ft² of meeting space consists of three ballrooms and twenty-eight flexible breakout rooms including five Executive boardrooms.

AT A GLANCE

- A masterpiece of 1930s French art deco design
- In the heart of downtown Cincinnati
- AAA Four-Diamond hotel and restaurant
- Located in Carew Tower shopping and dining complex
- 561 guest rooms including 71 suites
- 31 flexible meeting and banquet rooms
- Only 15 minutes from the Cincinnati/Northern Kentucky International Airport



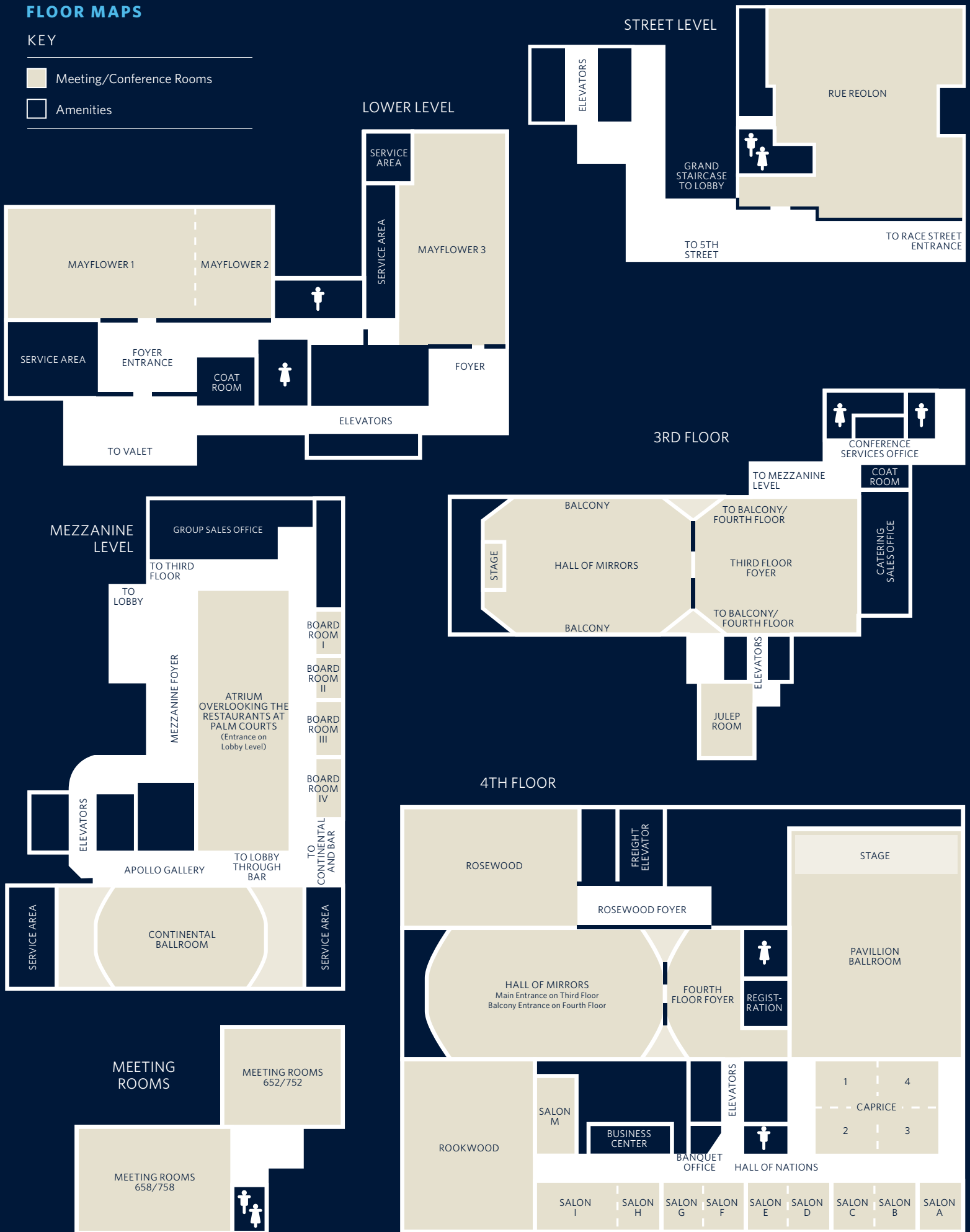
Hilton

CINCINNATI NETHERLAND PLAZA

FLOOR MAPS

KEY

- Meeting/Conference Rooms
- Amenities



CONFERENCE & EVENT ROOMS

CAPACITIES & DIMENSIONS

	L x W x H	Square Feet	Theater	Classroom	Banquet	U-Shape	Reception	Conference	Exhibits (8x10)
LOWER LEVEL									
Mayflower I & II	56 x 24 x 10'	1,344	100	69	100	40	150	40	
Mayflower I	24 x 40 x 10'	960	70	45	60	30	110	35	
Mayflower II	16 x 24 x 10'	384	36	21	20	15	40	20	
Mayflower III	18 x 45 x 10'	810	70	42	70	25	90	30	
STREET LEVEL									
Rue Reolon	54 x 52 x 9'	2,350	120	73	130	40	200	40	
MEZZANINE									
Continental	95 x 40 x 23'6"	3,800	336	154	200	60	380	70	14
Boardroom I	11 x 20 x 7'10"	219						8	
Boardroom II	10 x 14 x 7'11"	146						8	
Boardroom III	11 x 22 x 8'2"	239						12	
Boardroom IV	11 x 28 x 8'2"	301						12	
THIRD FLOOR									
Hall of Mirrors	89 x 60 x 29'6"	5,340	700	448	546		650		45
HOM w/o Balcony			600	362	450		600		
HOM Foyer	50 x 63 x 8.5"	3,160					varies		6
Julep	17 x 45 x 8'11"	765	50	36	40	25	70	30	
FOURTH FLOOR									
Pavillion Caprice	158 x 77	11,343	1,000	500	730		1,000		29
Pavillion	114 x 77	8,778	700	400	514		750		16
Pavillion Foyer	34 x 63 x 12.5"	2,915					varies		4
Caprice	44 x 55 x 10'	2,420	140	72	200		250		13
Caprice 1 & 4	22 x 55 x 10'	1,210	120	66	80	40	125	44	
Caprice 2 & 3	22 x 55 x 10'	1,210	120	66	80	40	125	44	
Caprice 2	22 x 28 x 10'	616	40	24	30	18	65	22	
Caprice 3	22 x 28 x 10'	616	36	21	30	18	65	22	
Salon A	20 x 26 x 10'3"	520						14	
Salon B	18 x 26 x 10'5"	468	35	21	20	15	50	20	
Salon C	18 x 26 x 10'5"	468	35	21	20	15	50	20	
Salon B & C	36 x 26 x 10'5"	936	80	42	50	30	100	35	
Salon D	18 x 26 x 10'5"	468	35	21	20	15	50	20	
Salon E	18 x 26 x 10'5"	468	35	21	20	15	50	20	
Salon D & E	36 x 26 x 10'5"	936	80	42	50	30	100	35	
Salon F	18 x 26 x 10'5"	468	35	21	20	15	50	20	
Salon G	18 x 26 x 10'5"	468	35	21	20	15	50	20	
Salon F & G	36 x 26 x 10'5"	936	80	42	50	30	100	35	
Salon H	18 x 26 x 10'5"	468	35	21	20	15	50	20	
Salon I	38 x 26 x 10'5"	988	80	42	50	30	100	35	
Salon H & I	56 x 26 x 10'5"	1,456	110	77	100	50	150	50	
Salon M	20 x 44 x 10'5"	880	50	30	40	30	90	35	
Rookwood	71 x 59 x 10'5"	4,189	225	100	200	45	400	50	19
Rosewood	71 x 49 x 8'11"	3,479	225	100	200	45	300	50	23
MEETING ROOMS									
652	15 x 18 x 9'	270						10	
752	15 x 18 x 9'	270						10	
658	22 x 16 x 9'	352	40	20	30	20	40	25	
758	22 x 16 x 9'	352	40	20	30	20	40	25	





OUR ROOMS

STANDARD GUEST ROOMS, SUITES AND ACCESSIBLE ACCOMMODATIONS

Our beautifully appointed guest rooms and spacious suites feature the Hilton Serenity™ bed, a totally luxurious sleep experience. Stay productive with a work desk, wireless high speed internet access and voicemail, or relax while watching HBO and pay-per-view movies. Other amenities include Cuisinart coffeemaker, iron and ironing board, hair dryer, in-room safe, in-room refrigerator and complimentary weekday newspaper. Accessible rooms are available.



OUR FACILITIES

The mission at Hilton Cincinnati Netherland Plaza is to provide every possible comfort and courtesy. Stay connected with complimentary wireless high speed internet access in the Lobby and Palm Court. Other conveniences include the gift shop, valet parking, laundry and a full service spa off the Lobby.

FITNESS CENTER AND POOL

Rejuvenate after a busy day of meetings or sightseeing at The Gym at Carew Tower, located in the Lower Level. This 13,000ft² fitness club is complimentary for Guests and features everything needed for a satisfying workout, including an indoor pool, cardio machines, free weights, group classes, whirlpool, steam and sauna rooms.

BUSINESS CENTER

Stay connected with the office or prepare for presentations at Hilton Cincinnati Netherland Plaza's Business Center, which is furnished with state-of-the-art technology including computers, printers, photocopiers and wireless internet access. Additional services include faxing and copying.

BELVEDERE CLUB

Stop in for breakfast, relax over drinks and hors d'oeuvres, or get some work done at the city's premier Executive Lounge. The outdoor terrace makes the perfect spot for socializing. Computers and wireless high speed internet access are among the business necessities on hand. Complimentary for Gold and Diamond HHonors members and available to all Guests at a special surcharge.

MEETINGS

The more than 40,000ft² of meeting space consists of three ballrooms and twenty-eight flexible breakout rooms including five Executive boardrooms. A full service Business Center on the main meeting floor keeps Guests connected with computers, high speed internet access, fax and copier. A variety of audio/visual equipment is available, and all meeting rooms offer wired and wireless internet access.

LOCATION

Located in the Carew Tower shopping and dining complex in the heart of downtown Cincinnati with convenient access to over 90 shops, eateries and attractions. The hotel is just steps away from Fountain Square and Duke Energy Convention Center and a short 15 minute drive from Cincinnati/Northern Kentucky International Airport.



HILTON CINCINNATI NETHERLAND PLAZA
35 West Fifth Street | Cincinnati, OH 45202

T: +1 513 421 9100
F: +1 513 651 3195
E: cvgnp-salesadm@hilton.com

cincinnatinetherlandplaza.hilton.com

EAT & DRINK

ORCHIDS AT PALM COURT

Breathtaking architecture, an atmosphere of elegance and remarkable food combine to create a fine dining experience unlike any other. Whether the visit is for dinner or Saturday tea, Guests will soon see why this AAA Four-Diamond rated gem is counted among the country's top restaurants.

THE BAR AT PALM COURT

Sample a cocktail in the splendor of French art deco surroundings. Along with an extensive wine list and creative cocktails, the bar offers a variety of relaxed fare, including appetizers, salads and sandwiches. Weeknight happy hour and live jazz on Friday and Saturday nights makes this the place to be.

THE GRILLE AT PALM COURT

With beautiful décor and casual ambiance, this is the ideal spot for a hearty breakfast, Sunday brunch or quick lunch. Order from the many delicious options on the menu or indulge in the weekday lunchtime pasta bar.

IN-ROOM DINING

Dive into a delicious meal without leaving your guest room. Choose from a variety of breakfast, lunch, dinner and late night menu options.



OUT & ABOUT

Shop, dine out and enjoy the nightlife, with 90 stores and eateries just steps from the Lobby. Explore the region's rich cultural history, from its storied past to a future bright with possibilities, at one of Cincinnati's many museums. Spend an afternoon on the riverfront at The Banks entertainment district/park. The Banks offers 63 acres of bike and walking trails, dining and shopping and is conveniently located between the Reds and Bengals' stadiums just four blocks from the hotel. Take to the skies at the Carew Tower Observation Deck, the tallest elevated building in the city, and admire city vistas for miles in every direction.